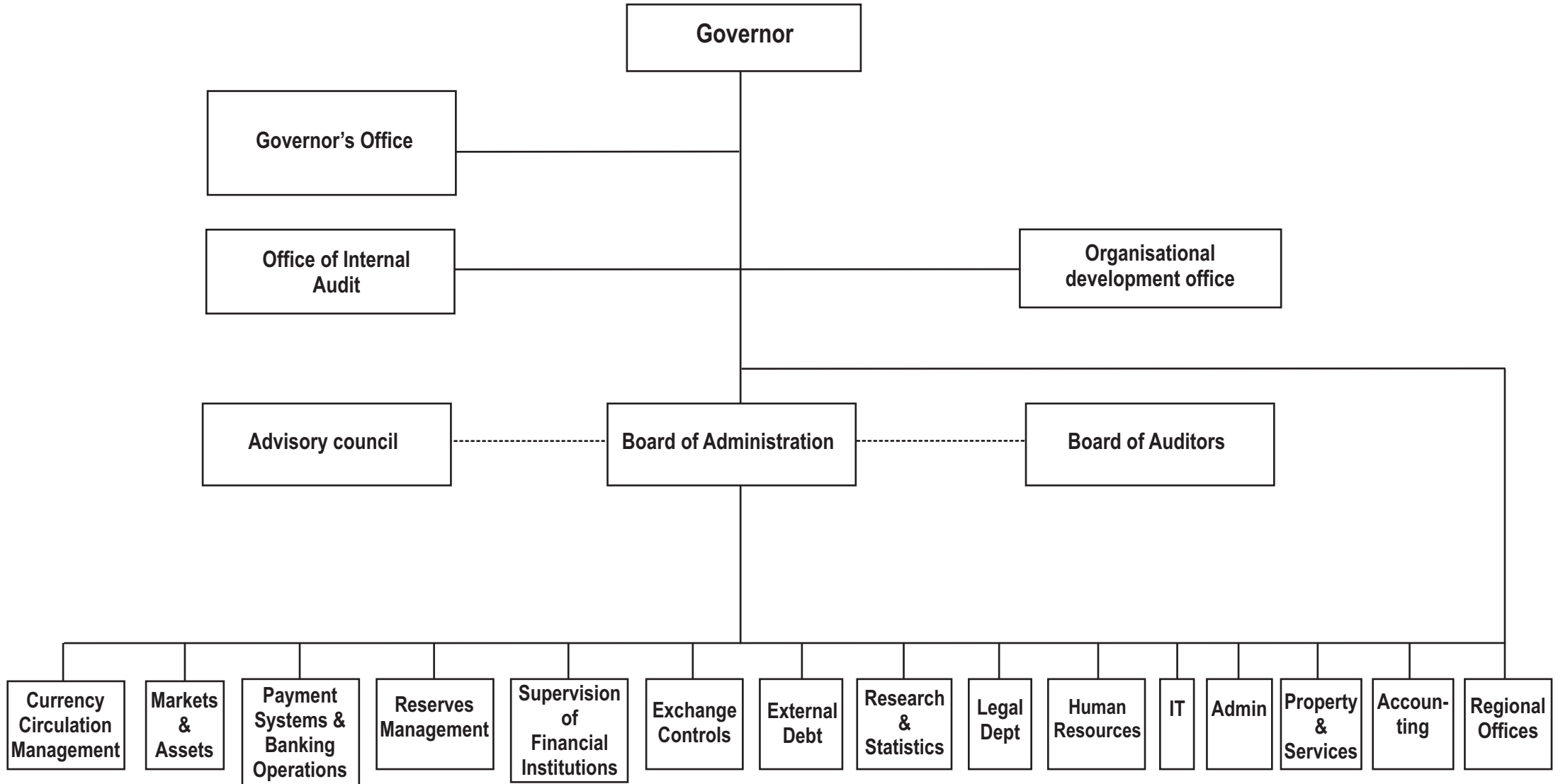
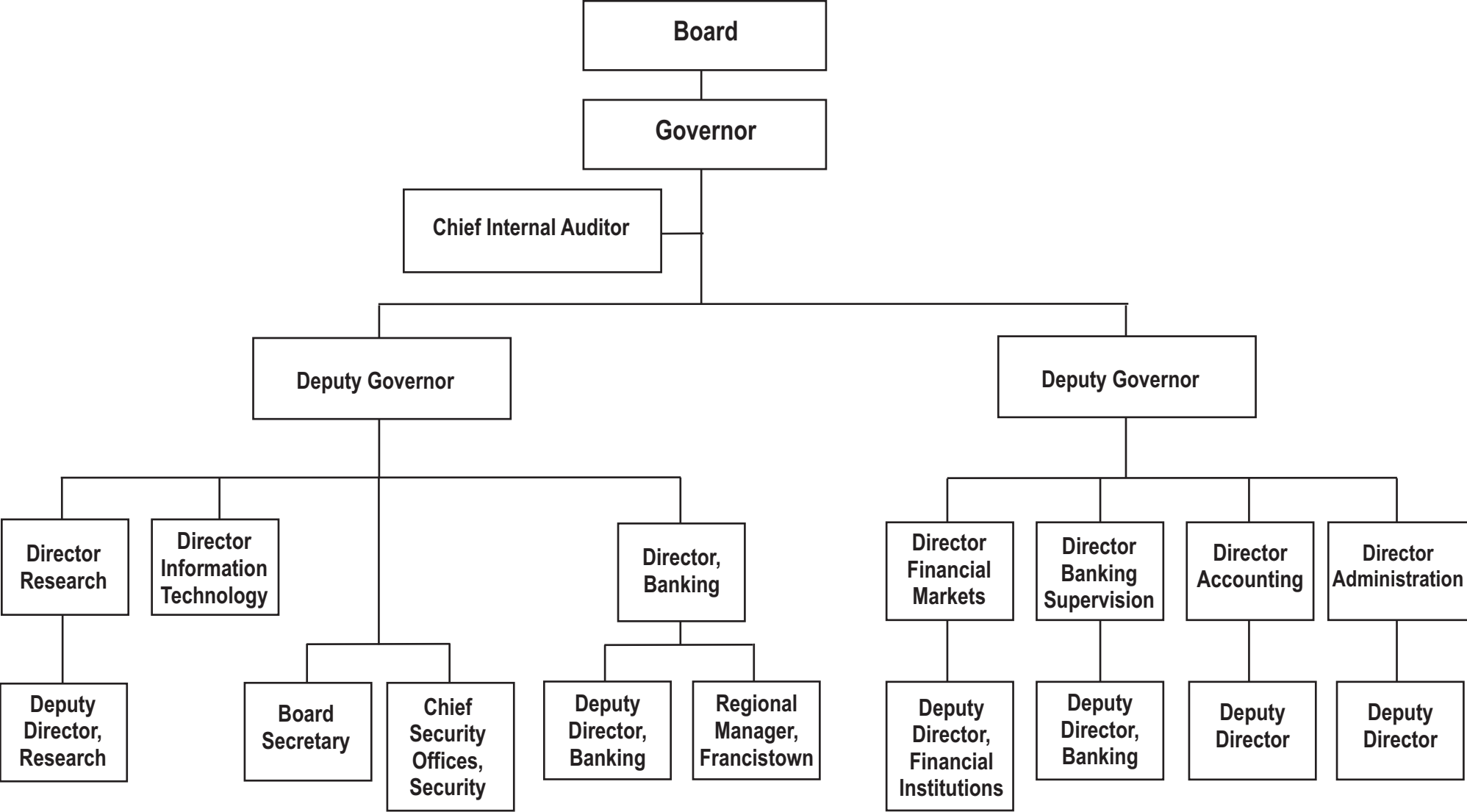


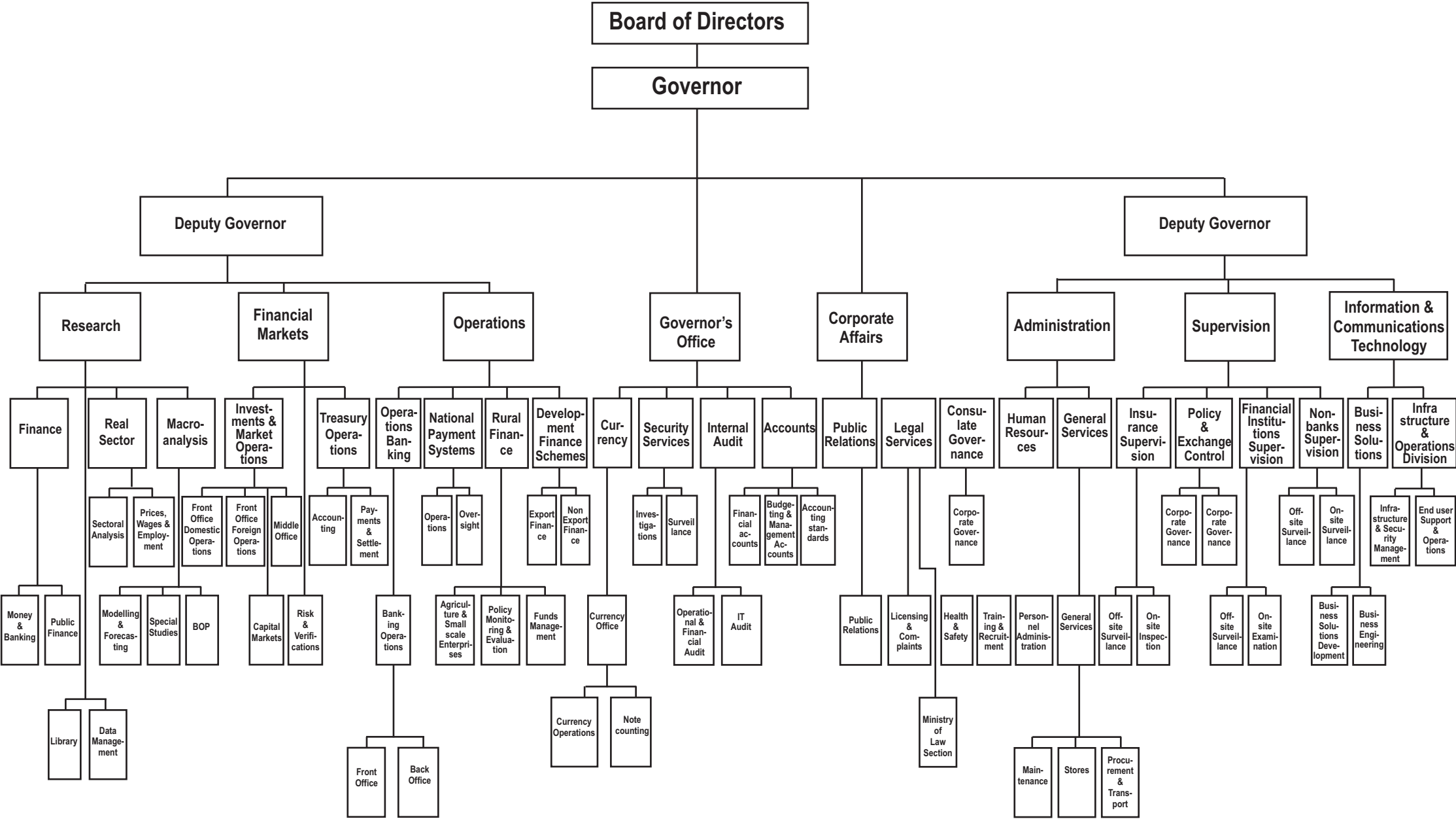
ORGANISATIONAL STRUCTURE OF BANCO NACIONAL DE ANGOLA



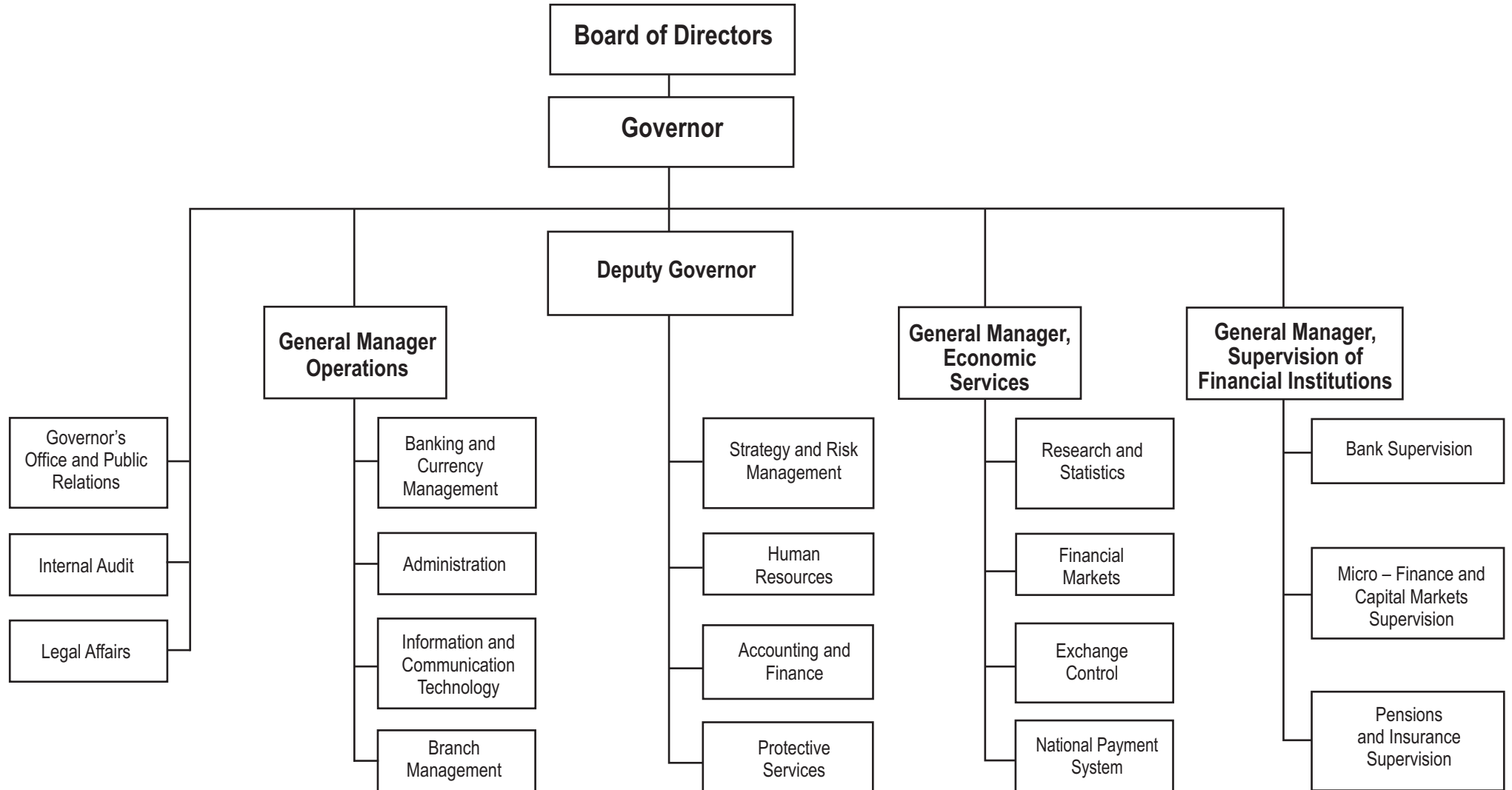
ORGANISATIONAL STRUCTURE OF BANK OF BOTSWANA



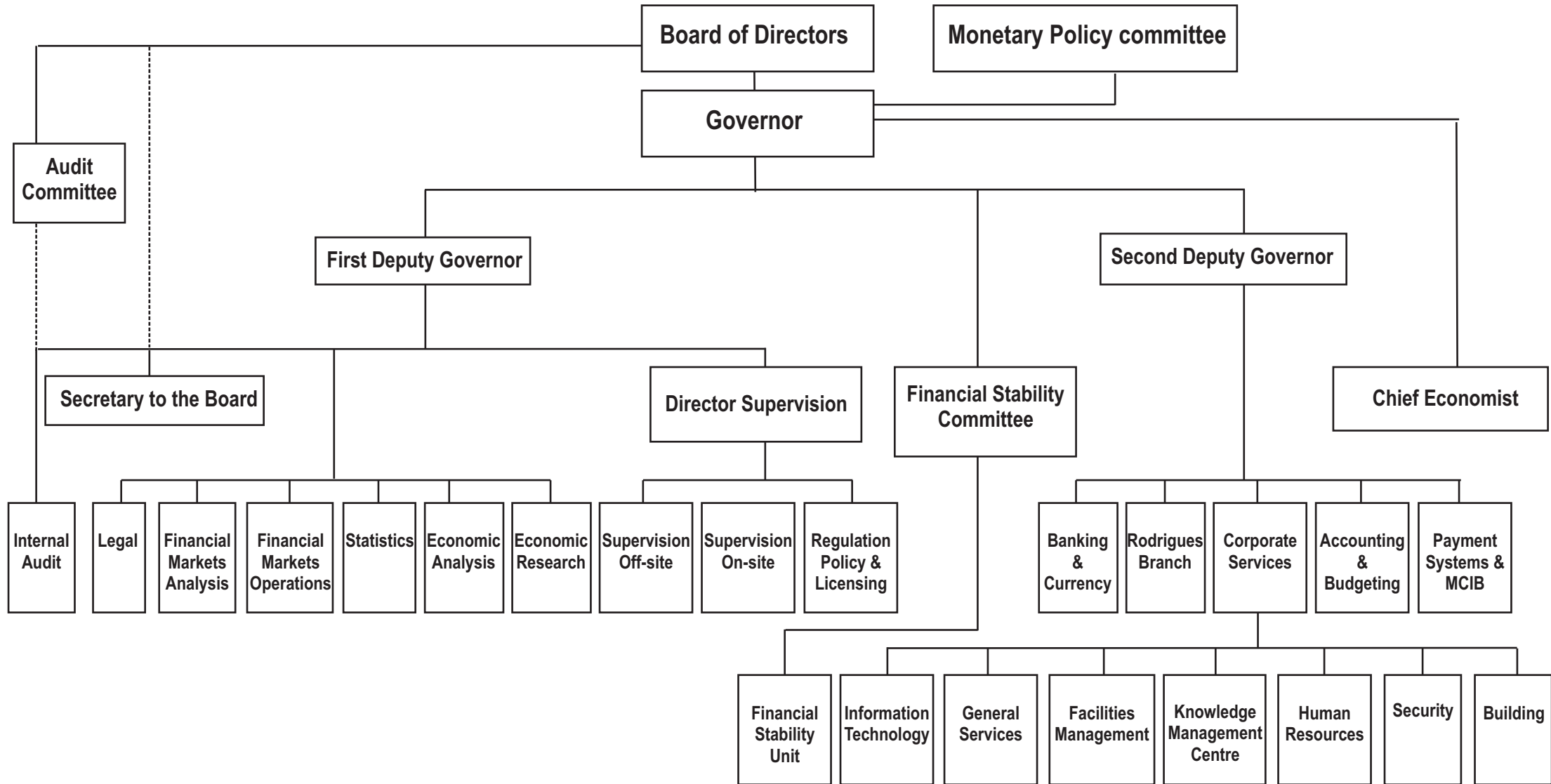
ORGANISATIONAL STRUCTURE OF CENTRAL BANK OF LESOTHO



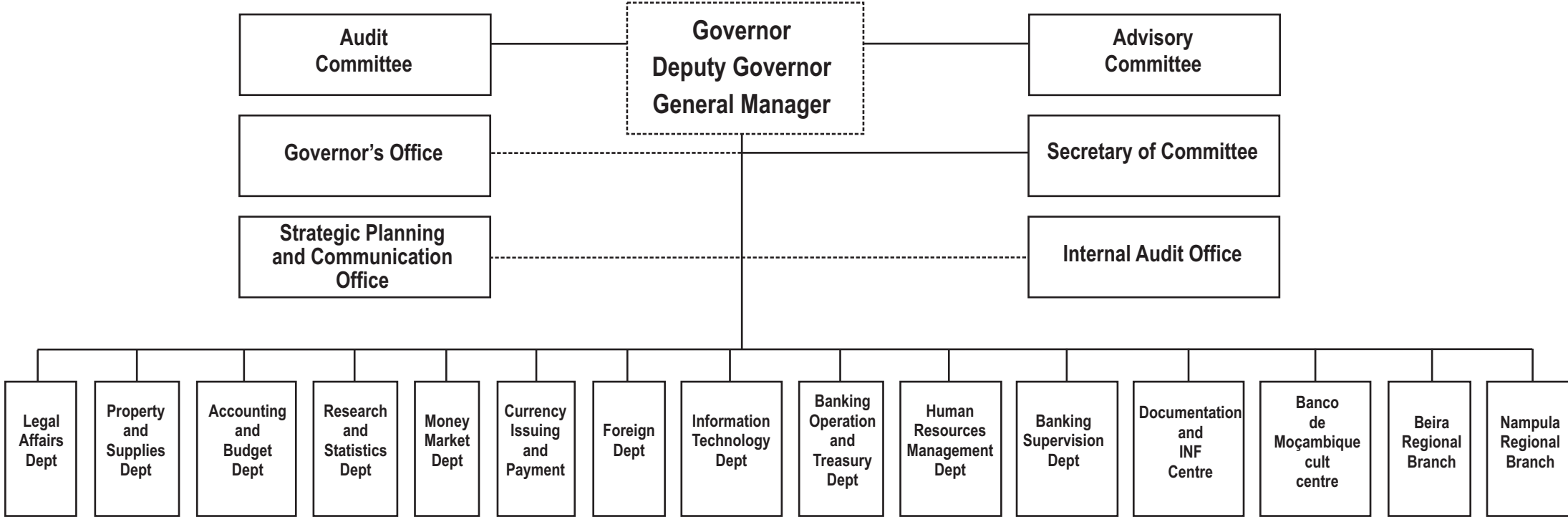
ORGANISATIONAL STRUCTURE OF RESERVE BANK OF MALAWI



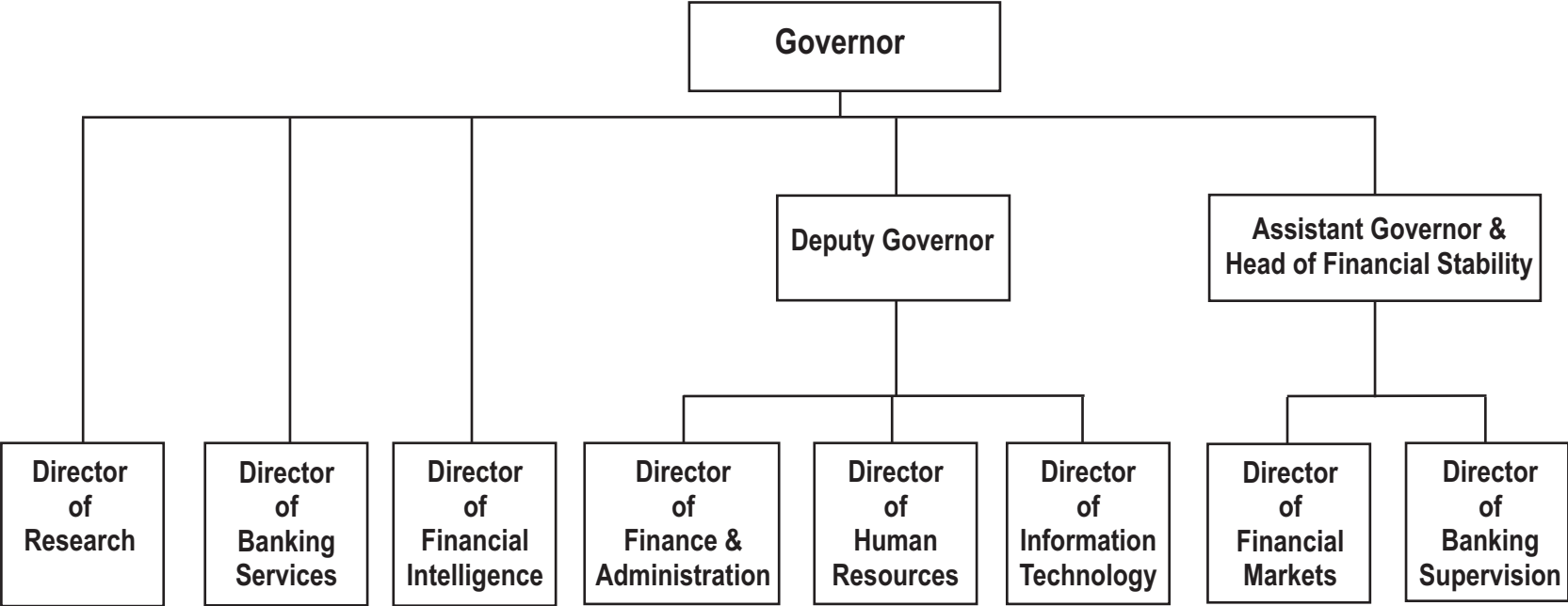
ORGANISATIONAL STRUCTURE OF BANK OF MAURITIUS



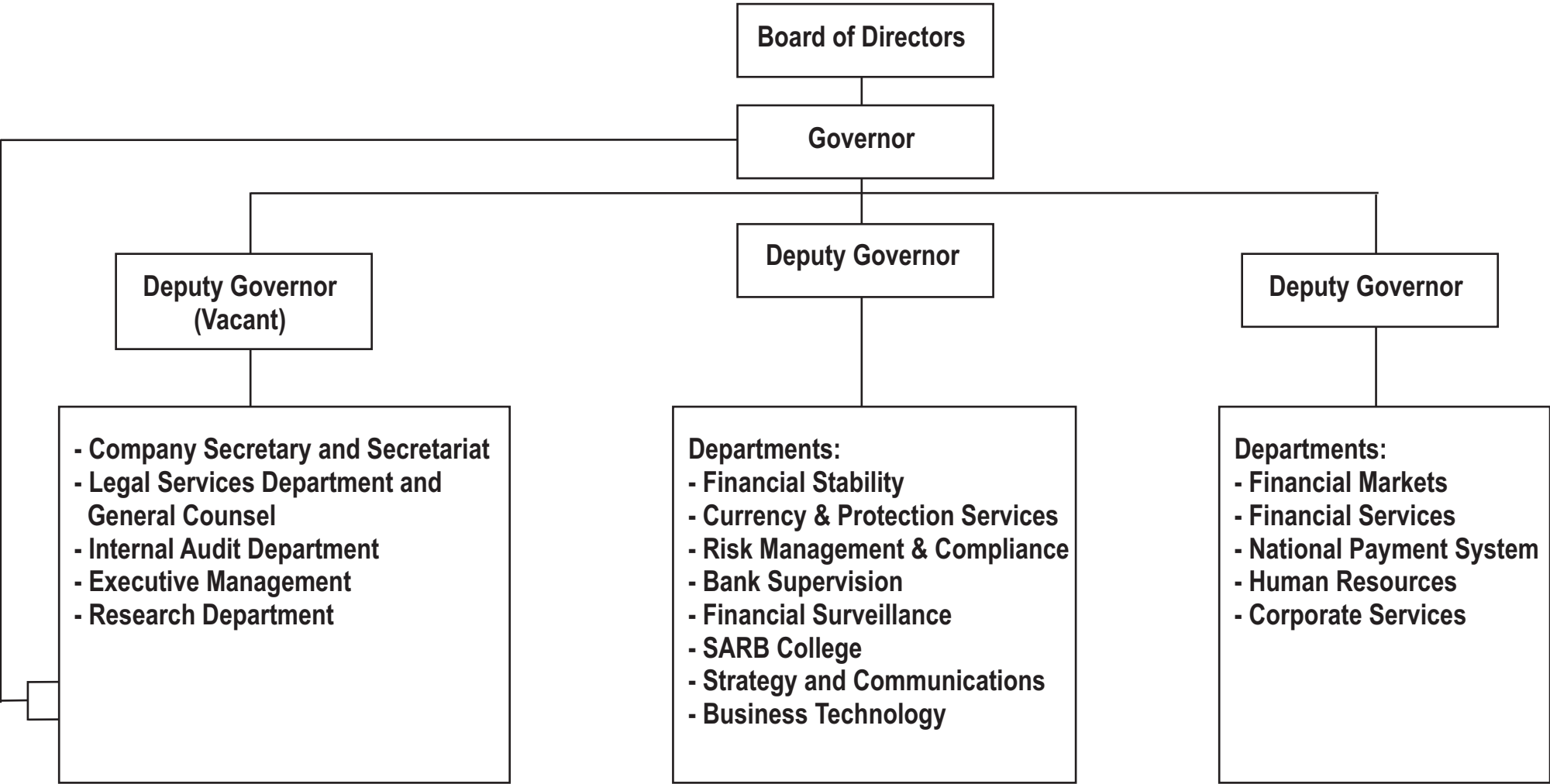
ORGANISATIONAL STRUCTURE OF BANCO DE MOÇAMBIQUE



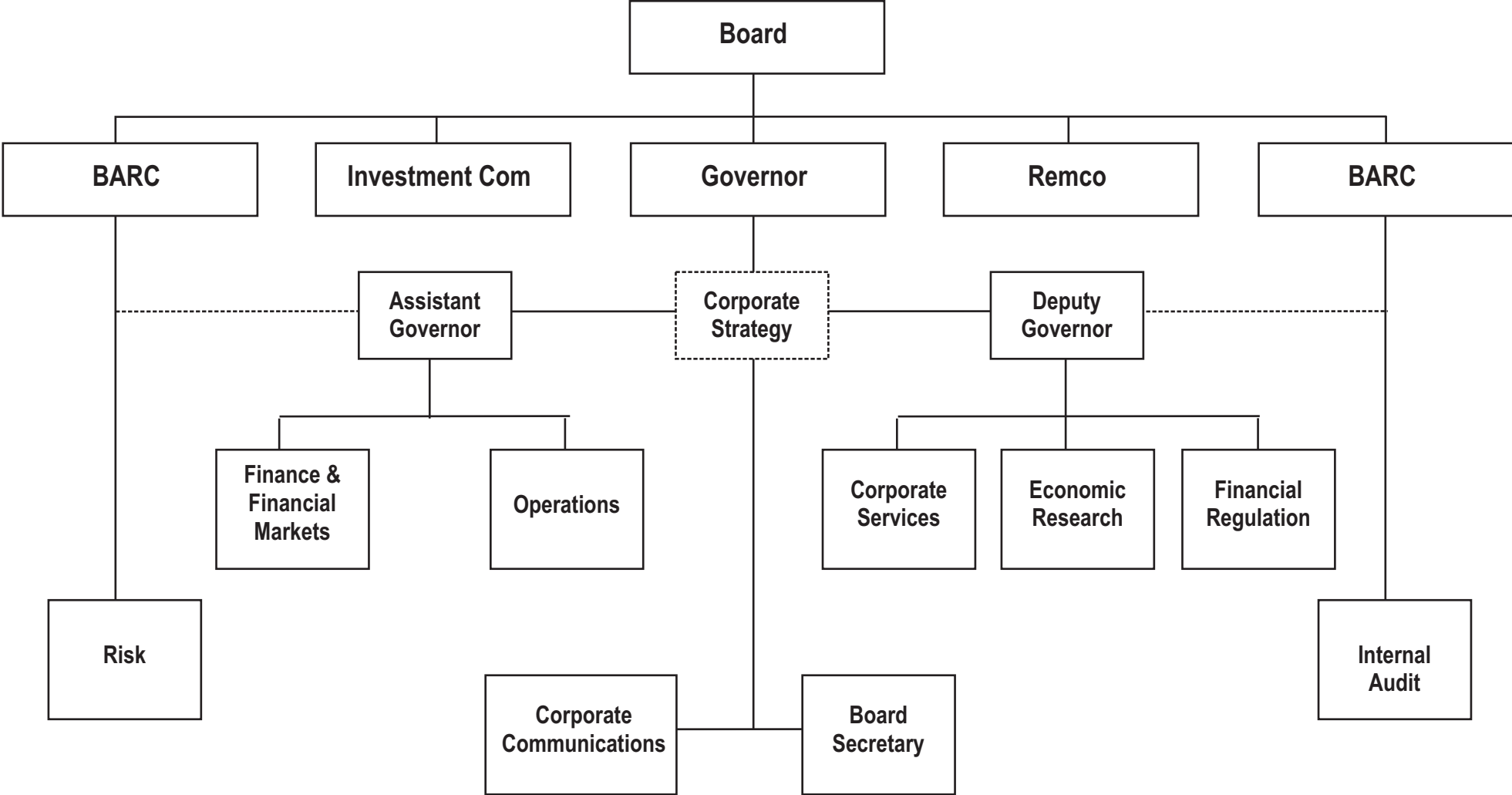
ORGANISATIONAL STRUCTURE OF BANK OF NAMIBIA



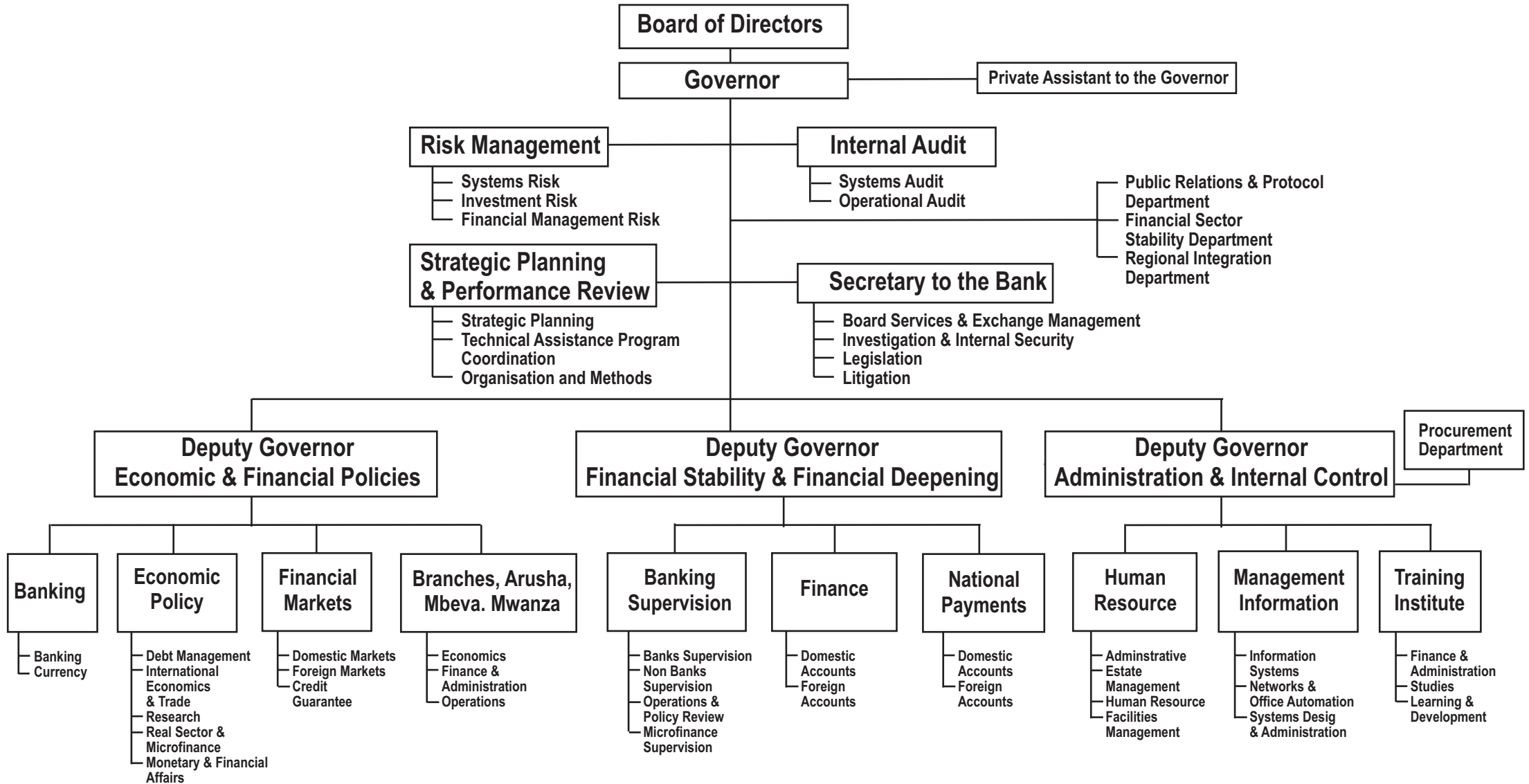
ORGANISATIONAL STRUCTURE OF SOUTH AFRICAN RESERVE BANK



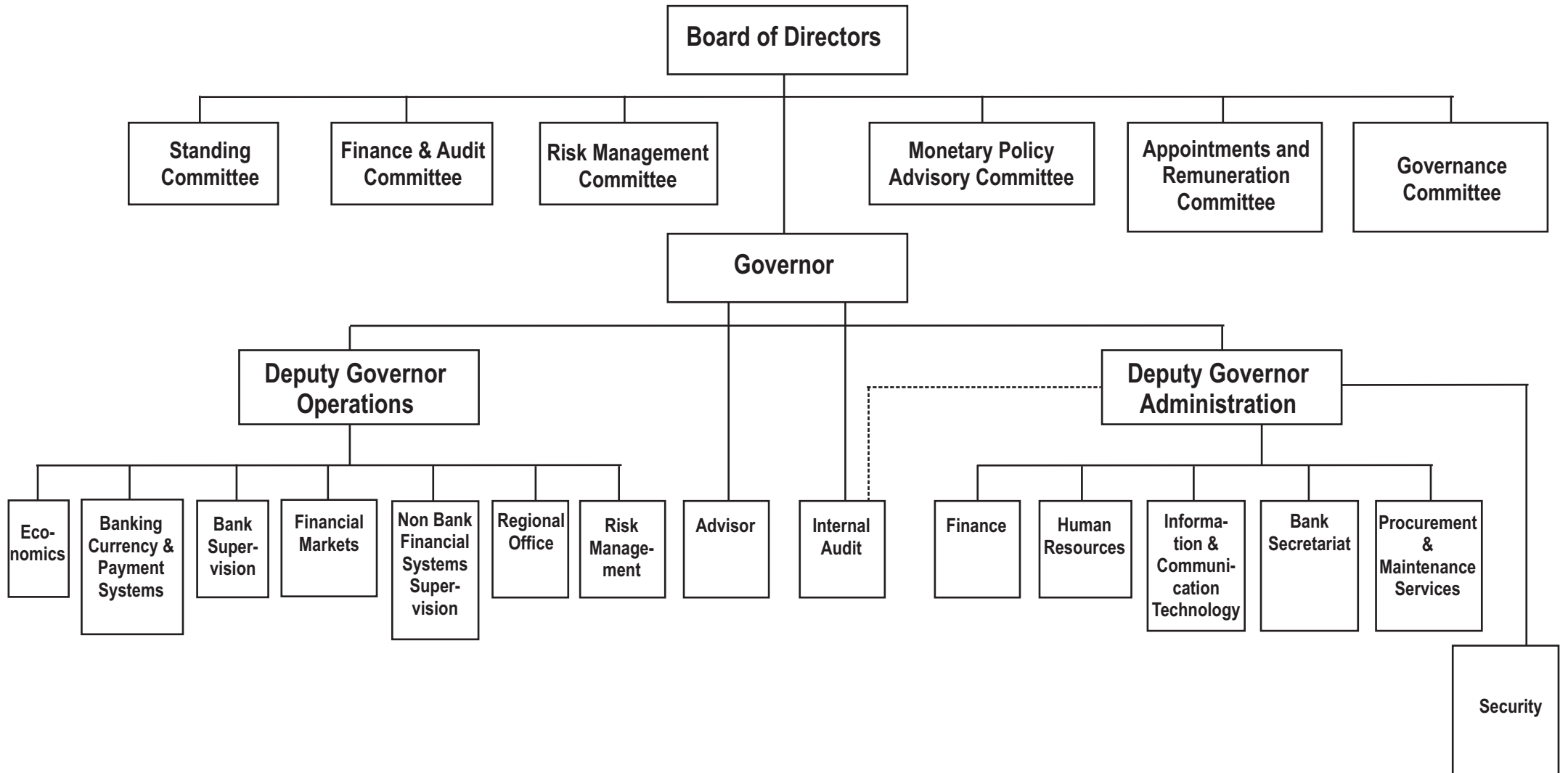
ORGANISATIONAL STRUCTURE OF CENTRAL BANK OF SWAZILAND



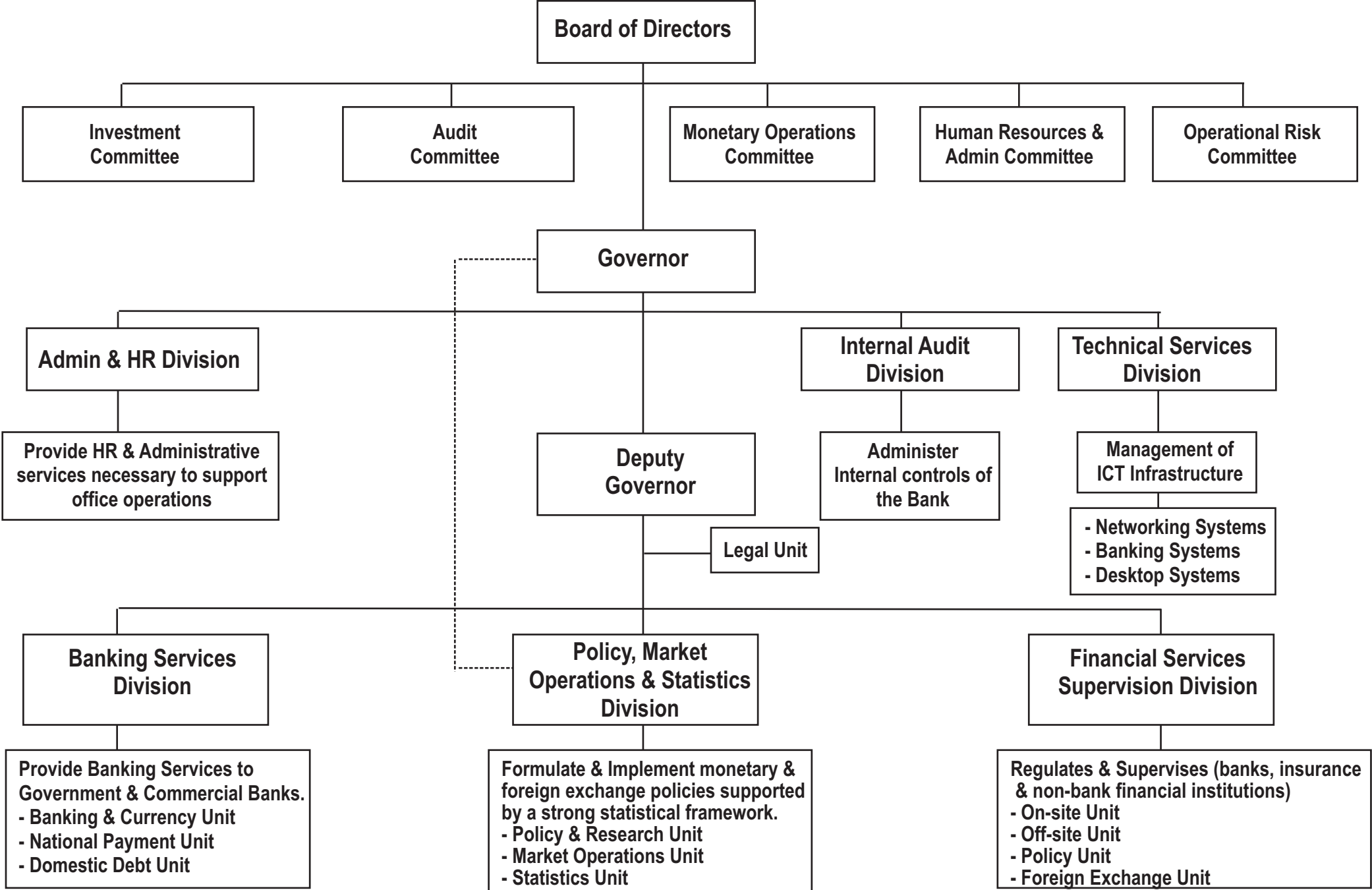
ORGANISATIONAL STRUCTURE OF BANK OF TANZANIA



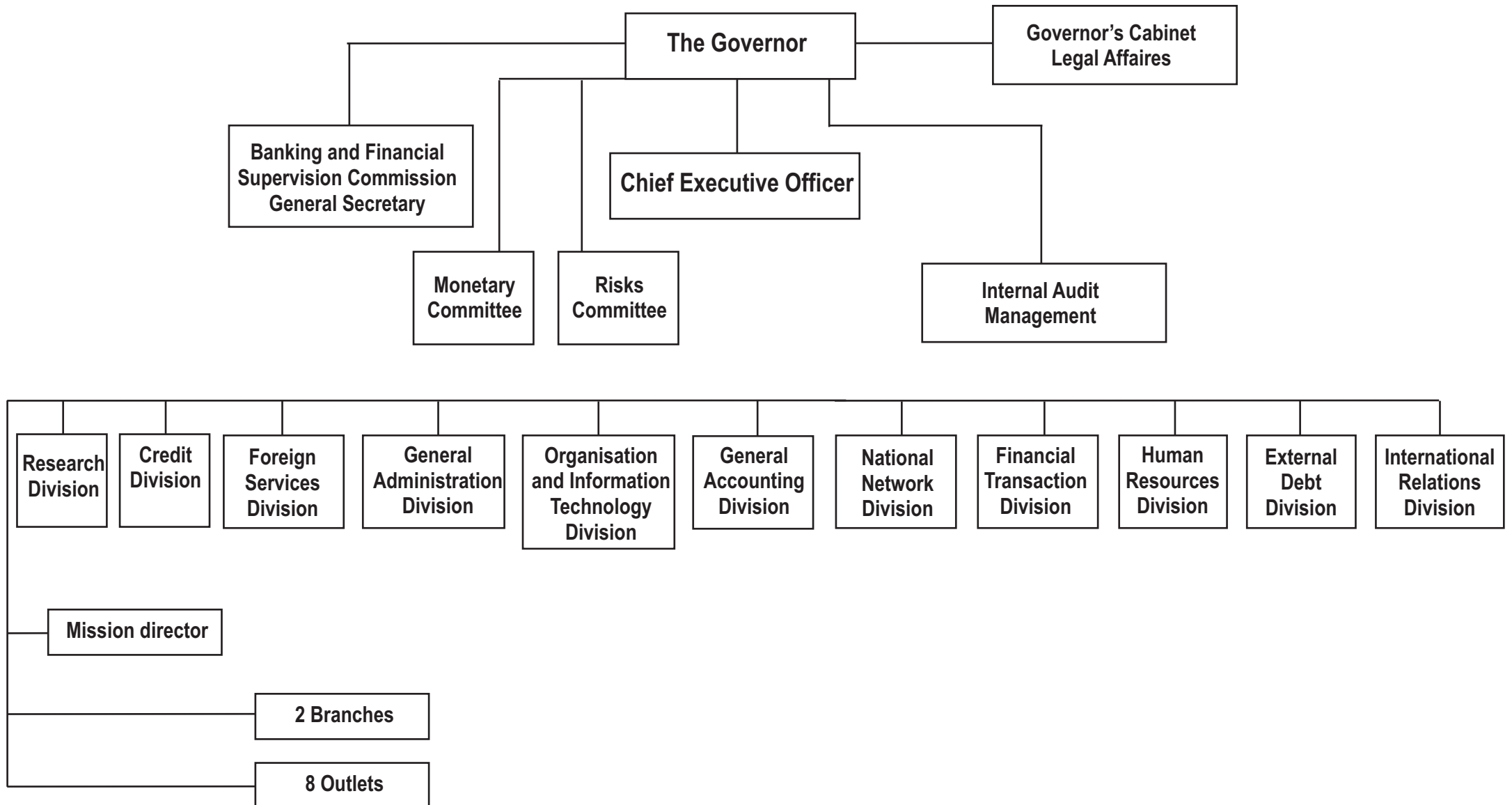
ORGANISATIONAL STRUCTURE OF BANK OF ZAMBIA



ORGANISATIONAL STRUCTURE OF CENTRAL BANK OF SEYCHELLES



ORGANISATIONAL STRUCTURE ET THE BANQUE CENTRAL DU MADAGASCAR



ORGANISATIONAL STRUCTURE OF RESERVE BANK OF ZIMBABWE

Board of Directors

Governor

Governor's Office
1 Governor's Assistant

Policy Advisor, Strategic Planning etc.

Division Chief
Business Continuity &
Market Stabilisation

Division Chief
Corporate Affairs etc

Division Chief
Corporate Governance
Risk Mgt & Internal Audit

Division Chief
IT etc

Head Security

Dep. Div. Chief IT
& Technology

Deputy Governor
National Development &
Economic Research

CEO
Energy & Infrastructure
Development Bank

Deputy Governor
Financial Markets,
Banking operations &
Nat Payment Systems

CEO
Export-Import Bank
of Zimbabwe

Deputy Governor,
Bank Licensing,
Supervision &
Surveillance,
Exchange Control &
Anti-mon Laund

Division Chief
Finance, HR,
Admin. Procurement
& Logistics

Division Chief
National Development &
Economic Research

Division Chief
Energy Development

Division Chief
Infrastructure
Development

Deputy Division Chief
Economic Research

Deputy Division Chief
National Development

Deputy Division Chief
Prod. Sector Facilities

Deputy Division Chief
Statistics & Econometrics

DEMOCRATIC REPUBLIC OF THE CONGO

